

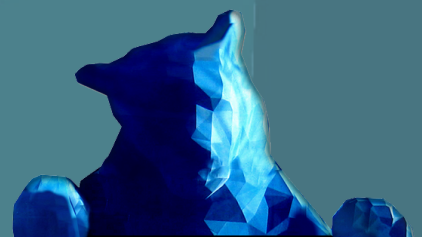
# COLORADO CONVENTION CENTER

---

2018 SUSTAINABILITY REPORT



C O L O R A D O  
CONVENTION CENTER



# ENVIRONMENTAL POLICY

---

The Colorado Convention Center and SMC commit to operations which reduce our environmental impact, focus on conserving resources, and utilizing products, technologies, and methods which continually improve in these efforts. Our sustainable initiatives focus in the areas of: Waste Reduction and Diversion; Energy Conservation; Water Quality and Consumption; Air Quality; Procurement; and Community.



# SUSTAINABILITY CERTIFICATIONS

The CCC believes in using certifications as both a tool and guide in developing and implementing our sustainability initiatives. Maintaining these certifications demonstrates an on-going commitment to sustainability, continual improvement, and transparency of our sustainability efforts.

- LEED Existing Building: Operations and Maintenance Level GOLD
- ASTM/APEX Sustainable Event Venue – Level Two
- ISO Standard 14001: Environmental Management System
- The CDPHE Colorado Environmental Leadership Program (ELP) - Gold



# WASTE MANAGEMENT

Our comprehensive waste management program focuses on identifying, reducing, and diverting the various waste streams created by venue operations, attendees, and clients. Components of this plan include a facility waste audit, as well as methods to reduce the amount of waste being created, manage inevitable waste, and divert waste from landfill by means of reuse, repurposing, recycling, and composting.

Material	2018 (lbs)	2017 (lbs)
Single Stream Recycling	871,986	667,058
Plastic Bales	9,520	12,580
Compost	592,020	467,240
Paper Shredding*	5,936	4,874
Metal	69,440**	33,860**
RAFT	1,250 cu ft of material	430 cu ft of material
Employee Electronic Recycling	1,587	1,174
Landfill	1,551,481	1,248,853
<b>Total Waste</b>	<b>3,101,970</b>	<b>2,441,309</b>
<b>Total Diversion</b>	<b>1,550,485</b>	<b>1,192,456</b>
<b>Diversion Rate</b>	<b>50%</b>	<b>49%</b>

\*5,936 lbs of paper recycled = 50 trees saved, 20,790 gallons of water saved, 12,177 Kw of energy saved

\*\* 2017 Metal rebates =\$1,500 in rebates to CCC and savings of \$1,956 in hauling cost.

\*\* 2018 Metal rebates = \$1,811 in rebates to CCC and savings of \$3,129 in hauling cost.



---

# ENERGY EFFICIENCY

---

Our electrical department works hard to reduce energy consumption through mindful scheduling, equipment retrofits and upgrades, and preventative maintenance.

## Retrofit Projects:

### Administrative Offices

- 8.449 kW removed from grid annually
- 26,101.32 kWh annual system savings
- \$2,610 annual energy cost saving

### Parking Garage

- 7.756 kW removed from grid annually
- 57,115.97 kWh annual system savings
- \$ 5,140 annual energy cost savings

### Mile High Ballroom

- 208.007 kW removed from grid annually
- 284,605.10 kWh annual system savings
- \$28,460 annual energy cost savings

## Equipment Maintenance:

The Engineering department conducted a recommissioning project on air handlers and VFD's and were recalibrated per recommendations for increased efficiency. Contracted with company to clean all air handler coils on roof for an estimated energy efficiency of 20%. This practice has been integrated into the PM every 5 years.

# STAFF ENGAGEMENT: VOLUNTEER PROJECTS

A The Colorado Convention Center believes in being a good member of our community and supports and encourages our employees to do the same. In 2018, through SMG sponsored opportunities, employees Volunteered 259 collective hours at the following organizations/events: Habitat for Humanity, Cuernavaca Park Project, Civic Center Independence Eve, CO Pet Pantry, Project Homeless Connect, Salvation Army Thanksgiving, Salvation Army Christmas.



---

# STAFF ENGAGEMENT: CLIMB

---

The CCC CLIMB program continued to be a success among employees with the goal of offering programs that were fun, educational, and benefited the community, all while building employee comradery.

C - Community outreach through volunteer programs

L - Leadership in Sustainability programs and in our responsibility to the environment

I - Identify and incorporate life safety practices in our workplace

M - Making employee health a priority by reinforcing physical, mental and emotional wellness

B - Build a work environment that appreciates and acknowledges employees who provide great customer service, reinforce CCC values, and make strong team builders

SMG  
DENVER





# STAFF ENGAGEMENT: CLIMB

In 2018 this program consisted of the following events: Book Club, Ski trip, Rockies 5k, Furry Scurry, Spartan Race, Broncos 7k, Hot Chocolate 5k, Susan G. Komen Fun Run, Turkey Trot, Bike to work day goodie bags for those who rode in, Plant and Paint Nights, and a Pumpkin Carving competition.





# STAFF ENGAGEMENT: SUSTAINABILITY

- Earth Day Green Week Challenge had 31 employee participants who committed to sustainable actions for the year.
- Awarded (4) Champion for the Environment Awards to convention center employees for their continued leadership in our programs.



# EMPLOYEE E-WASTE RECYCLING EVENT

For the third year, SMG sponsored an employee Hard to Recycle Event. For a week, employees were given the opportunity to bring in old electronics to be recycled responsibly by BlueStar Recycling, documents to be shred by Bayaud, and shoes and clothing to be donated by Gone For Good. Many employees took advantage of this no-cost opportunity, resulting in 1,587lbs of e-recycling, 121lbs of document shredding, and approximately 25lbs of clothing.

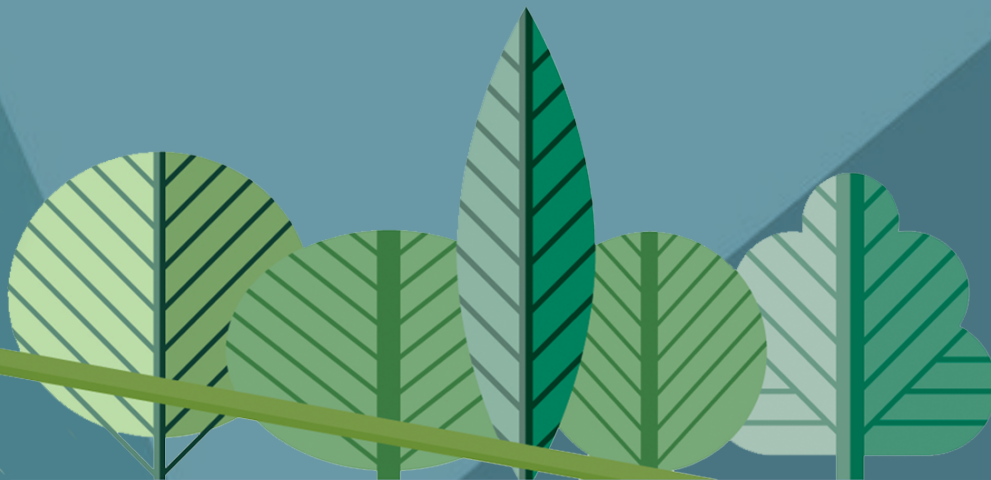


---

# LEARN MORE

---

For additional information  
regarding this report and/or  
our initiatives at the CCC,  
please contact our  
Sustainability Manager,  
Lindsay Arell  
[larell@denverconvention.com](mailto:larell@denverconvention.com)  
or visit our website.



C O L O R A D O  
CONVENTION CENTER

[WWW.DENVERCONVENTION.COM](http://WWW.DENVERCONVENTION.COM)

