



# THE COLORADO CONVENTION CENTER

**Designed by Meeting Professionals. For Meeting Professionals.**

THE COLORADO  
CONVENTION CENTER

OVERALL  
FLOORPLAN

TERRACE  
LEVEL

EXHIBIT LEVEL

MEETING ROOM  
LEVEL

BELCO THEATRE

BALLROOMS

DISCOVER DENVER





# THE COLORADO CONVENTION CENTER

The Colorado Convention Center (CCC) is one of the most practical meeting facilities ever built. And one of the most beautiful. From the extensive public art program to the spectacular views of Denver and the Rocky Mountains, the CCC provides five-star service and modern amenities... all in a central location within easy walking distance of more than 13,000 hotel rooms and Denver's compact, vibrant downtown.

A unique and strong partnership between VISIT DENVER and the Colorado Convention Center team of ASM Global and Sodexo Live! makes booking and executing an event a hassle-free, one-step process that you will not find in any other city.

**Discover what Denver can do for your meeting!**





# THE COLORADO CONVENTION CENTER IS EXPANDING!



The upcoming expansion, scheduled for completion in late 2023, will make the Colorado Convention Center (CCC) the best and most user-friendly meeting & event space in the nation.

New features will include the flexible 80,000-square-foot Bluebird Ballroom, plus 35,000 square feet of pre-function space and a jaw-dropping 20,000-square-foot outdoor terrace, all of which will be located on the roof of the existing building.

Both the pre-function and outdoor event spaces will have spectacular, unobstructed views of the Rocky Mountains and city skyline, allowing attendees to take advantage of Denver's 300 annual days of sunshine.

Technology improvements will position the CCC as a best-in-class facility, keeping pace with innovations and demand.

**For more information on the progress of the expansion, visit [CCCExpansion.com](http://CCCExpansion.com).**



# THE COLORADO CONVENTION CENTER FLOOR PLANS



## THE COLORADO CONVENTION CENTER CONSISTS OF FOUR LEVELS:

1



### TERRACE LEVEL

The Terrace Level is the newest addition to the Colorado Convention Center! This level will include the 80,000-square-foot Bluebird Ballroom divisible into 19 breakout rooms, 35,000 square feet of pre-function space and a 20,000-square-foot outdoor terrace with panoramic views of the Rocky Mountains and Denver's city skyline.

2



### EXHIBIT LEVEL

All 577,000 square feet of contiguous exhibit space is on one level, one floor up from street entrances.

3



### MEETING ROOM (STREET) LEVEL

The street level has 63 meeting rooms offering 100,000 square feet of meeting space, served by six lobby/registration areas and four shuttle drop-off zones (three of them covered).

The 5,000-fixed-seat Bellco Theatre is also on this level.

4



### BALLROOM LEVEL

This lower level features two hotel-quality ballrooms: The 50,000-square-foot Mile High Ballroom and the 35,000-square-foot Four Seasons Ballroom, each with its own spectacular pre-function space. Groups can easily move between the two spaces via a connected corridor.

Both ballrooms offer state-of-the-art lighting and sound options.



1

## TERRACE LEVEL

80,000-Square-Foot Bluebird Ballroom

35,000-Square-Foot Pre-function Space

20,000-Square-Foot Outdoor Terrace

3

## MEETING ROOM (STREET) LEVEL

100,000 Square Feet of Meeting Room Space

2

## EXHIBIT LEVEL

577,000 Square Feet of  
Contiguous Exhibit Space

5,000 Fixed-Seat  
**BELCO THEATRE**

BELCO  
THEATRE

MILE HIGH  
BALLROOM

FOUR SEASONS  
BALLROOM

HYATT REGENCY DENVER  
AT COLORADO  
CONVENTION CENTER

4

## BALLROOM LEVEL

50,000-Square-Foot  
Mile High Ballroom

35,000-Square-Foot  
Four Seasons Ballroom







# TERRACE LEVEL



The Colorado Convention Center has significantly increased its offering of meeting, banquet and light exhibition space through its new rooftop expansion – creating an unrivaled dynamic, flexible and destination-oriented venue.

## BLUEBIRD BALLROOM

The new Terrace Level is situated above the existing D and E Exhibit halls, and features an 80,000-square-foot, column-free multi-function space that can be divisible into various configurations via acoustically rated operable walls, including 19 meeting room subdivisions of varying sizes, to meet the needs of almost any event. In its full configuration, the Bluebird Ballroom can host more than 7,500 attendees for a general session or 4,600 guests for a catered event. The space also includes a dressing room and a registration office and is equipped throughout with state-of-the-art digital and telecommunications infrastructure, as well as 30-foot high ceilings and rigging point accommodation at 30-foot centers across the entirety of the room.

## PRE-FUNCTION CONCOURSE

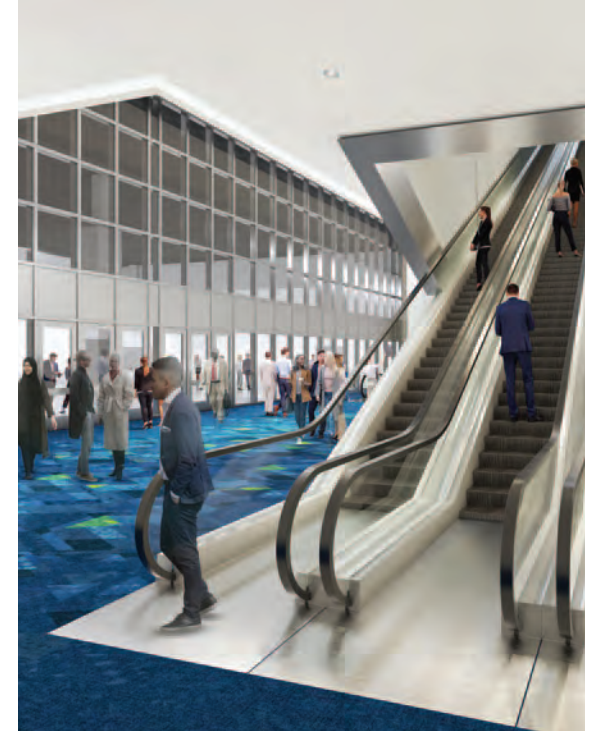
Adjacent to the Bluebird Ballroom is a new wrap-around, pre-function concourse, which features dramatic views of the Rocky Mountains and is clearly and conveniently accessible via the center's existing street-level lobbies. Generously sized at 35,000 square feet, this beautiful space offers a variety of seating options for networking between sessions, as well as registration or refreshments.

## ROOFTOP TERRACE

One of the highlights of the expansion is the new 20,000-square-foot Rooftop Terrace. Situated adjacent to the pre-function space, the Rooftop Terrace features spectacular views of the Rocky Mountains to the north and west and stunning views of Denver's skyline to the east. This space can be utilized in combination with the pre-function space and/or Bluebird Ballroom or serve as a nice networking space in between sessions. 30-foot-wide by 10-foot-high accordion-style doors connect the Rooftop Terrace to the pre-function space and will allow for seamless indoor/outdoor events, allowing event planners and attendees to take full advantage of Denver's year-round mild climate and over 300 days of sunshine.

## KITCHEN

The expansion also includes a new banquet kitchen to support the Bluebird Ballroom, pre-function and Rooftop Terrace spaces. Generously sized at over 19,000 square feet, the new kitchen operates as a separate and independent operation from the existing food and beverage facilities in the Center and can facilitate all types of events, from casual to luxury styles of service. Multiple access points from the kitchen to a new service corridor adjacent to



the ballroom provide for flexible access to the room, whether in its fully open or divided configurations.

## EXHIBITOR ACCESS

Exhibitor move-in/move-out is supported by two new 12-foot by 20-foot, 20,000-pound-capacity freight elevators, providing seamless movement of vehicles and larger goods/exhibits from the existing loading docks to the new ballroom. Exhibitors in smaller vehicles have their own dedicated load-in/ load-out access to the new spaces, via ramp at parking level P3.

## TERRACE MEZZANINE LEVEL

The new Terrace Mezzanine is a partial level above the new kitchen and includes dedicated building storage which can be accessed from either the freight or service elevators. Also located at this level is a new Hospitality Suite, a 500-square-foot space adorned in hotel-quality finishes that includes its own dedicated service pantry, with flexible furniture options that allow it to serve as a tasting room, a green room or an executive meeting room. This suite is accessed via public elevator and includes full height glass walls that overlook the new pre-function concourse and Rooftop Terrace.



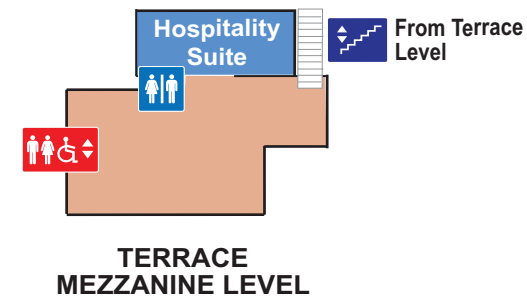


## BLUEBIRD BALLROOM DIMENSIONS/CAPACITIES

### SEATING CAPACITIES

Banquet layouts are based on 66" round tables w/ 10 chairs per table. Classroom layouts are based on 8' x 18" tables w/ 4 chairs per table.

BALLROOM	DIMENSIONS W' x L'	SQ. FEET	THEATRE	BANQUET	CLASSROOM
1A	88 X 116	10,200	1,064	540	300
1B	88 X 116	10,200	1,064	540	372
1C	88 X 116	10,200	1,064	540	348
2A	58 X 60	3,480	364	200	168
2B	30 X 60	1,800	180	80	96
2C	30 X 60	1,800	180	80	96
2D	30 X 60	1,800	180	80	96
2E	30 X 60	1,800	180	80	96
2F	30 X 60	1,800	180	80	96
2G	30 X 60	1,800	180	80	96
2H	30 X 60	1,800	180	80	96
3A	58 X 58	3,360	364	200	168
3B	30 X 60	1,800	180	80	96
3C	30 X 60	1,800	180	80	96
3D	30 X 60	1,800	180	80	96
3E	30 X 60	1,800	180	80	96
3F	30 X 60	1,800	180	80	96
3G	30 X 60	1,800	180	80	96
3H	29 X 60	1,800	180	80	96
1A-C	267 X 116	30,972	3,456	2,720	1,323
2A-H	268 X 60	16,080	2,044	920	861
3A-H	268 X 60	16,080	2,044	920	861
Full Room	267 X 294	80,000	7,900	4,600	
Full Room (Head Table East)	267 X 294	80,000			3,808
Full Room (Head Table South)	267 X 294	80,000			3,904







## EXHIBIT LEVEL

The Colorado Convention Center (CCC) offers 577,000 square feet of contiguous exhibit space – a 14-acre room, all on one level.

The six halls can be divided into spaces of approximately 100,000, 200,000, 300,000, 400,000 or 500,000 square feet.

Hall A's column-free center can accommodate unobstructed seating for 7,000 people.

Floor outlet panels are on 30-foot centers; columns are on 90-foot centers.

Two tradeshow offices located above halls A and F overlook the exhibit floor with large glass windows.

### FOOD RETAIL

The exhibit level features seven Sodexo Live! food retail areas that provide for a unique Colorado experience that celebrates the flavors and traditions of the Rocky Mountain region. The concession areas feature grass-fed beef burgers developed with Denver's own Chef Troy Guard, authentic Mexican tortas inspired by famed Mexican Chef Roberto Santibañez and crispy thin crust pizza hand-crafted by Bill Pustari, owner of the award-winning Modern Apizza.

### CATERING

Great food and beverage help create memorable moments. With tailored catering solutions from Centerplate, the catering offering from Sodexo Live!, the exclusive caterer for the CCC, you'll exceed attendee expectations with their culinary selections. Receive first-class service from kitchen to table with hospitality professionals dedicated to your success. Feel great about supporting local suppliers, many of



which are minority-owned or small business enterprises, bringing your guests the flavors of the region. Whether it's the seasonal Blue Bear Farm grazing table or Colorado Olathe sweet corn crème brulee, create a unique Colorado experience that will keep attendees asking for more!

### LOBBIES

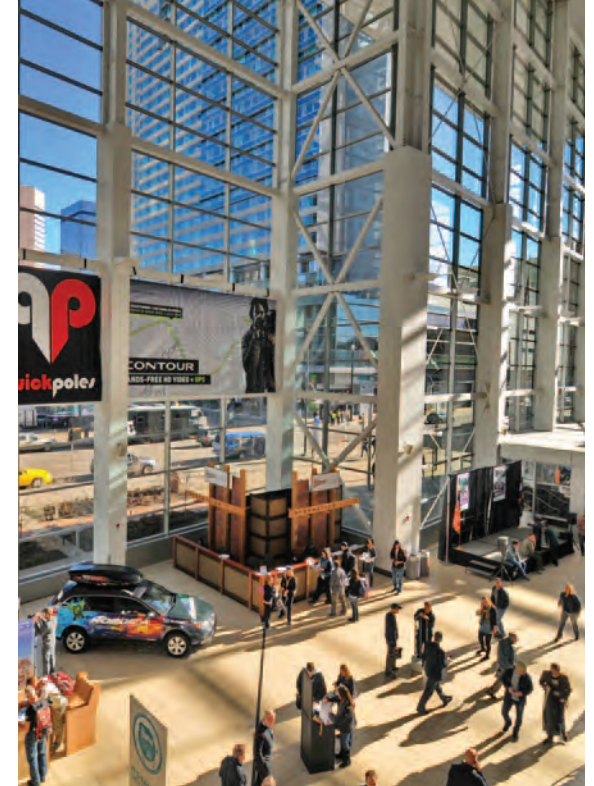
The exhibit floor offers access to a total of 36,000 square feet of lobby space.

### OUTDOOR TERRACES

There are two outdoor terraces off of the exhibit floor: To the west, facing Speer Boulevard, a 7,500-square-foot terrace with mountain views; off of Hall D, to the east, a 1,350-square-foot terrace that faces 14th Street with city views off of Hall F.

### PARKING

There is a 600-space public parking garage built into the convention center.



### LOADING DOCKS

The exhibit floor is served by 42 docks that can accommodate 80-foot trucks.

### ELECTRICAL & TELEPHONE SERVICE

The CCC has trained electricians and telecommunications technicians to work directly with exhibitor services staff to handle all power and telephone needs.

### INTERNET SERVICES

Founded more than 30 years ago, Smart City Networks is the nation's largest provider of event telecommunications and technology in the convention industry. They are also the CCC's exclusive provider of technology services and provide high-speed internet and turnkey data networking services, including: Wi-Fi solutions, local area networks, wide area networks and private networks using the latest technology.

Free internet is available at street level in all meeting rooms and public spaces.



## EXHIBIT HALLS

	SQ. FEET	UPPER LOBBY ENTRANCE	TERRACE
A	105,000	5,600	
B	89,200		
C	95,000	4,800	
A+1/2 B	147,000		
C+1/2 B	142,200		
D	91,900	16,000	7,500
E	89,600		
F	106,000	10,200	1,350
D+1/2 E	143,900		
F+1/2 E	144,600		

## DOCKS

	LOCATION	CLIENT USE
27	Welton Street	22
22	Champa Street	20



Restrooms



Elevators (Accessible)



Public Escalators



Public Stairs



Concessions

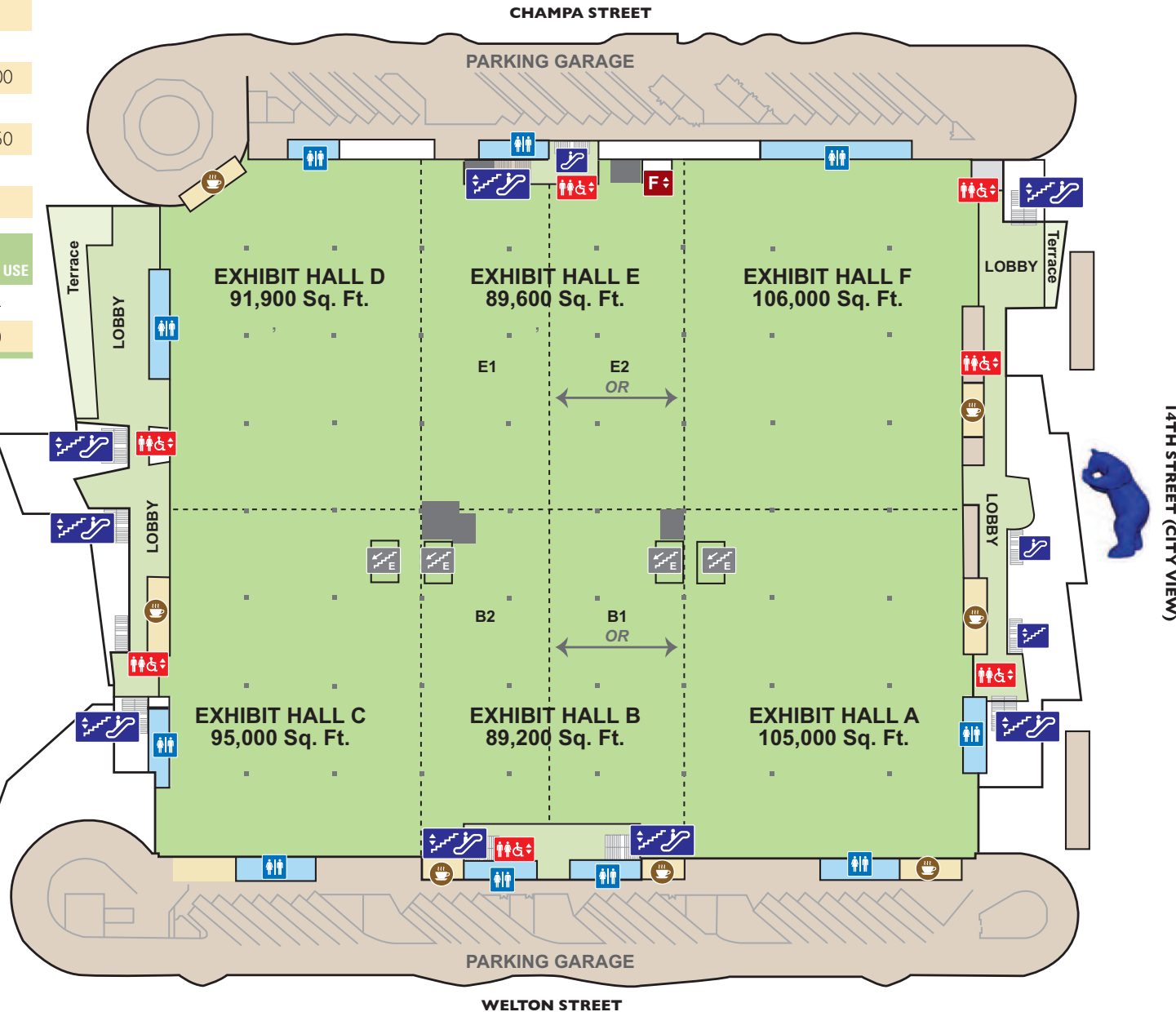


Emergency Stairs



Freight Elevator

SPEER BOULEVARD (MOUNTAIN VIEW)









## MEETING ROOM DIMENSIONS/CAPACITIES

### SEATING CAPACITIES

Meeting rooms are set with an 8'x12' riser, unless noted.  
Classroom capacities are based on 8'x18"  
unskirted tables with four chairs each, unless noted.

ROOM	DIMENSIONS W' x L'	SQ. FEET	CEILING HEIGHT	THEATRE	BANQUET	CLASSROOM	HOLLOW-SQ
101	30 X 30	900	15	**50	***50	**43	36
102	34 X 44	1,496	15	140	80	60	52
103	34 X 44	1,496	15	140	80	60	52
104	30 X 44	1,320	15	120	80	60	48
105	30 X 44	1,320	15	120	80	60	48
106	29 X 44	1,276	15	110	80	60	48
107	30 X 44	1,320	20	120	80	60	48
108	30 X 44	1,320	15	120	80	60	48
109	30 X 44	1,320	20	120	80	60	48
110	30 X 44	1,320	15	120	80	60	48
111	30 X 44	1,320	20	120	80	60	48
112	26 X 44	1,144	15	100	60	40	44
113	26 X 44	1,144	20	100	60	40	44
201	43 X 57	2,451	23	280	160	112	68
202	29 X 29	841	15	**50	***50	**40	36
203	43 X 57	2,451	20	280	160	112	68
204	29 X 29	841	15	**50	***50	**44	36
205	47 X 57	2,679	20	308	160	112	68
206	29 X 29	841	15	**50	***50	**40	36
207	47 X 57	2,679	20	308	160	112	68
208	29 X 29	841	15	**50	***50	**44	36
210	31 X 29	899	15	**50	***50	**48	36
212	30 X 29	870	15	**50	***50	**48	36
301	29 X 57	1,653	20	174	80	*90	60
302	29 X 57	1,653	20	174	80	*90	60
303	29 X 57	1,653	20	174	80	*90	60
304	29 X 57	1,653	20	174	80	*90	60
401	29 X 57	1,653	20	174	80	*90	60
402	29 X 57	1,653	20	174	80	*90	60
403	29 X 57	1,653	20	174	80	*90	60
404	29 X 57	1,653	20	174	80	*90	60
405	29 X 57	1,653	20	174	80	*90	60

## MEETING ROOM DIMENSIONS/CAPACITIES

### SEATING CAPACITIES

Meeting rooms are set with an 8'x12' riser, unless noted.  
Classroom capacities are based on 8'x18"  
unskirted tables with four chairs each, unless noted.

ROOM	DIMENSIONS W' x L'	SQ. FEET	CEILING HEIGHT	THEATRE	BANQUET	CLASSROOM	HOLLOW-SQ
406	29 X 57	1,653	20	174	80	*90	60
407	29 X 57	1,653	20	174	80	*90	60
501	29 X 57	1,653	20	174	80	*90	60
502	29 X 57	1,653	20	174	80	*90	60
503	29 X 57	1,653	20	174	80	*90	60
504	29 X 57	1,653	20	174	80	*90	60
505	29 X 57	1,653	20	174	80	*90	60
506	29 X 57	1,653	20	174	80	*90	60
507	29 X 57	1,653	20	174	80	*90	60
601	38 X 57	2,166	20	270	120	112	60
602	27 X 29	783	15	**50	***50	**33	36
603	38 X 57	2,166	20	270	120	112	60
604	31 X 29	899	15	**50	***50	**36	36
605	42 X 57	2,394	20	300	160	112	68
606	27 X 29	783	15	**50	***50	**36	36
607	44 X 57	2,508	23	300	160	112	68
608	31 X 29	899	15	**50	***50	**36	36
610	29 X 29	841	15	**50	***50	**33	36
612	30 X 29	870	15	**50	***50	**33	36
701	29 X 30	870	15	**50	***50	**36	36
702	34 X 44	1,496	15	140	80	60	52
703	34 X 44	1,496	15	154	80	60	52
704	30 X 44	1,320	15	120	80	60	48
705	30 X 44	1,320	20	120	80	60	48
706	30 X 44	1,320	15	110	80	60	48
707	30 X 44	1,320	20	120	80	60	48
708	30 X 44	1,320	15	120	80	60	48
709	30 X 44	1,320	20	120	80	60	48
710	30 X 44	1,320	15	120	80	60	48
711	26 X 44	1,144	20	108	60	40	44
712	26 X 44	1,144	15	108	60	40	44

\*Classroom capacities for the 300, 400 and 500 series meeting rooms are based on 6' x 18" unskirted tables with three chairs each.

\*\*No riser; head table only. \*\*\*No riser or head table.





# BELLCO THEATRE



The Bellco Theatre, named one of the "top 200 Theatre Venues Worldwide" by Pollstar, is the perfect space for general sessions, lectures, concerts, comedy shows and family spectaculars.

## LAYOUT

The theatre, when utilized to its full capacity, will seat just over 5,000. An in-house curtaining system can be implemented to eliminate the balcony section, bringing the capacity down to just over 3,700. The theatre can also be divided into three separate rooms seating approximately 1,300, 2,400 and 1,300 respectively, utilizing sound walls to allow for concurrent sessions. There are three "star" dressing rooms and a green room with direct backstage access. Five larger mixed-use rooms are available for chorus dressing, wardrobe, event dining or show offices. The theatre also features accessible seating throughout.

## OVERHEAD TENSION GRID SYSTEM

The overhead tension grid system can accommodate rigging points anywhere up and down the stage. Truss and motors are available.

## MAIN STAGE

The main stage is 50 feet by 100 feet with custom thrust options and a basic drapery package.

## TRUCK LOADING DOCK

The Bellco Theatre has its own truck dock with two end-load bays, one having side-load access.

## RIGGING CAPACITY

The Trolley Beams can accommodate four 4,000-pound point loads or 500 pounds per square foot uniform load.

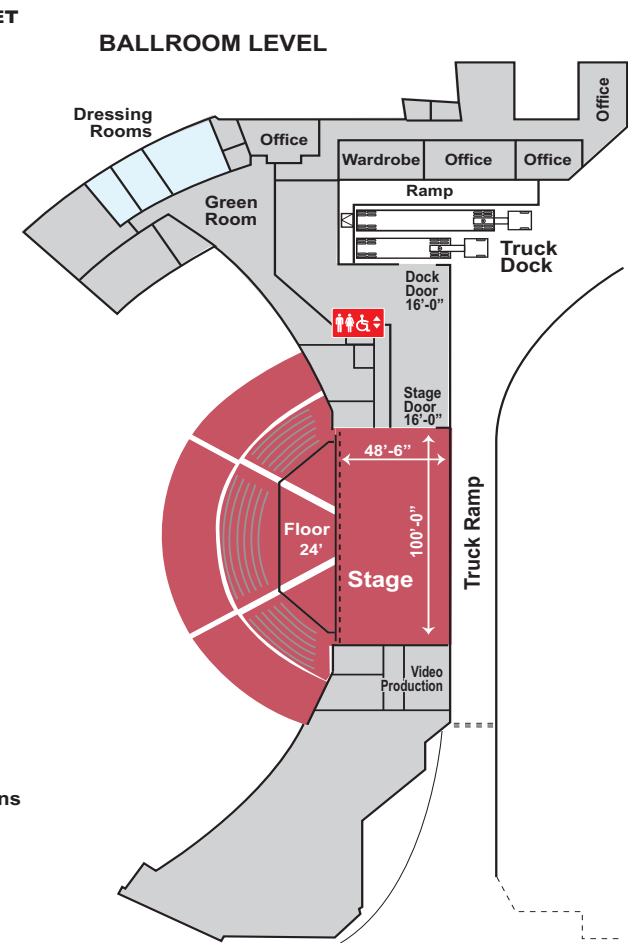
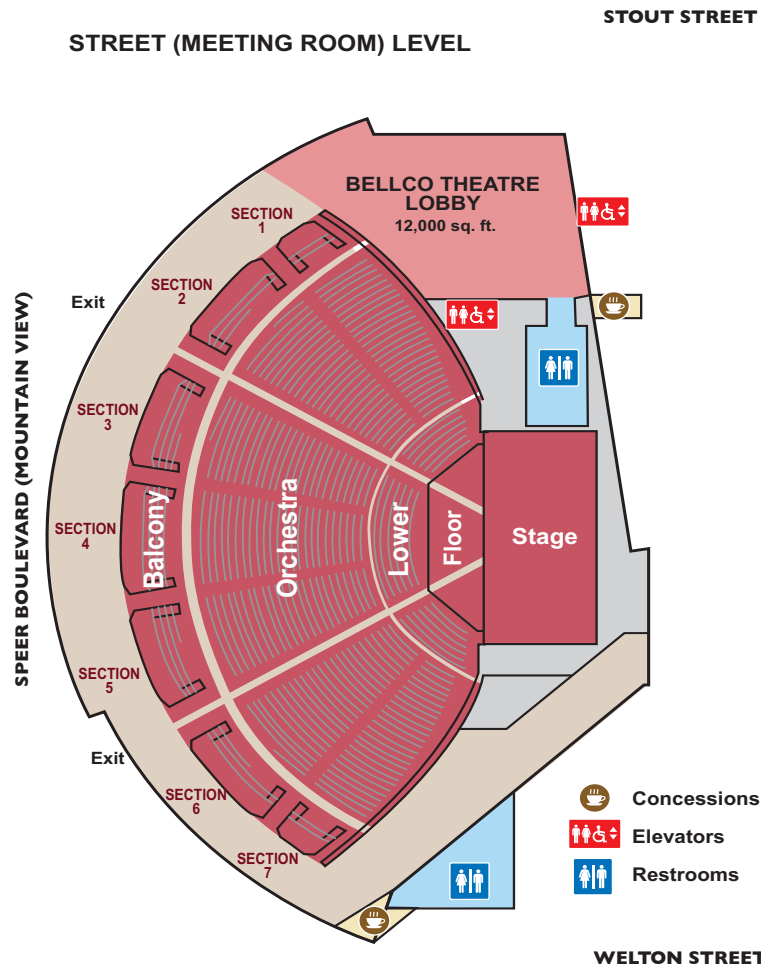






BELLCO THEATRE SEATING	
	CAPACITY
<b>BALCONY</b>	
Balcony 1-2	312
Balcony 3-5	752
Balcony 6-7	312
<b>ORCHESTRA</b>	
Orchestra 1-2	835
Orchestra 3-5	1,366
Orchestra 6-7	834
<b>LOWER</b>	
Lower 1	116
Lower 3	210
Lower 6	116
<b>FLOOR</b>	
Floor 1	*28
Floor 3	*96
Floor 6	*28
<b>TOTAL</b>	<b>5,005</b>

\*Floor seats are removable







# BALLROOM LEVEL

The Colorado Convention Center has two hotel-quality ballrooms of 50,000 and 35,000 square feet.

## MILE HIGH BALLROOM

This is the second largest ballroom in Denver, after the center's new rooftop ballroom, and one of the most versatile, occupying 50,000 square feet of event space. The Mile High Ballroom can accommodate more than 5,000 attendees for a general session or more than 3,000 guests for a catered event. It can be divided into 18 individual rooms in up to 180 different configurations.

The ballroom is served by 20,000 square feet of dedicated lobby space that works as a beautiful pre-function/reception area and also includes a small dressing room. The ballroom features color-coordinated deluxe carpeting and walls; advanced lighting controls that can create a starry night effect in any color; computer-controlled audio and lighting; and wireless internet capabilities.



## FOUR SEASONS BALLROOM

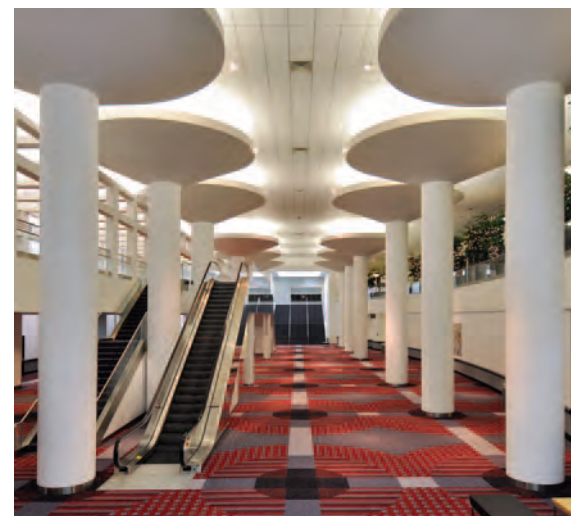
The Four Seasons Ballroom offers 35,000 square feet of space and can seat 3,472 people theater style or 2,260 for a banquet. It is served by a spectacular 13,024-square-foot pre-function area as well as two small dressing rooms.

## ACCESS BETWEEN BALLROOMS

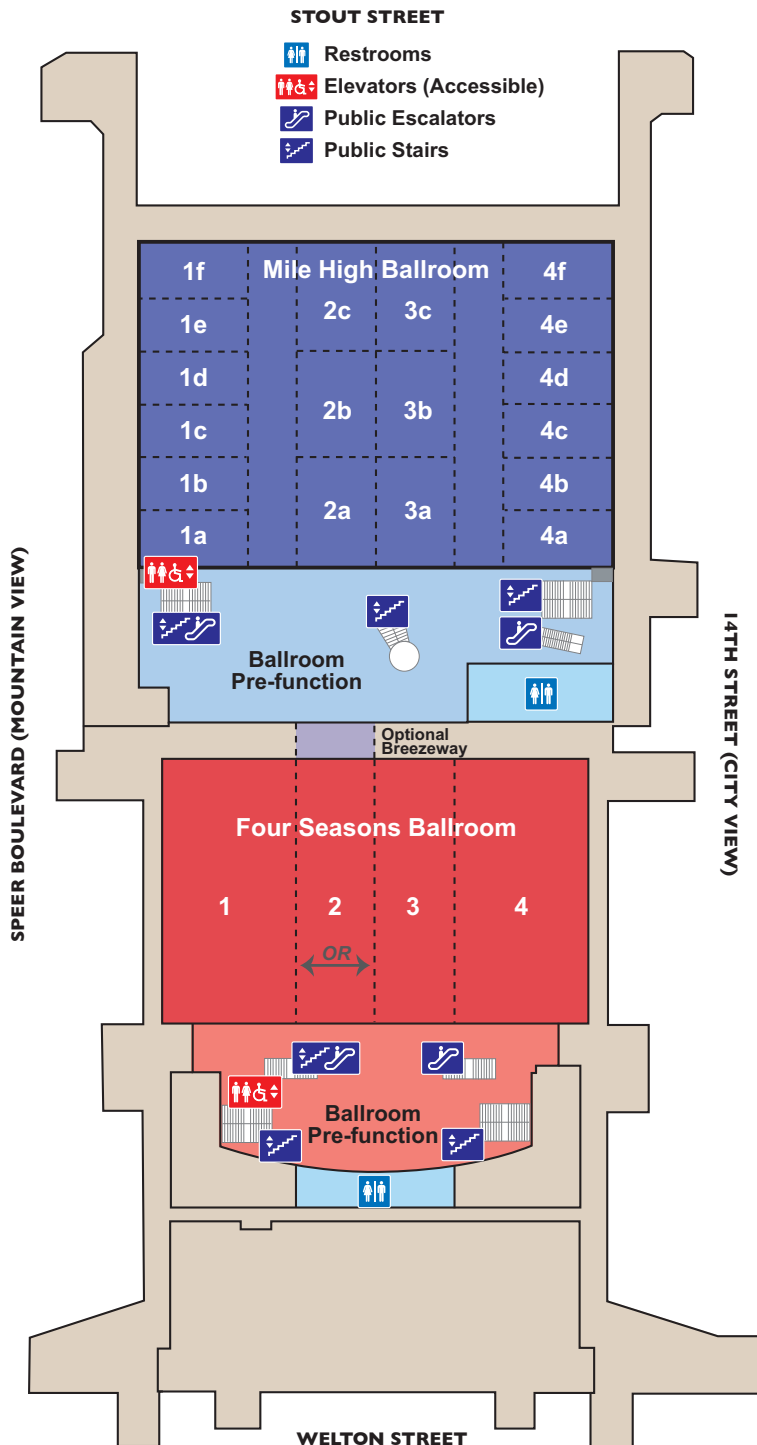
A breezeway provides easy access directly from the Four Seasons Ballroom into the pre-function space of the Mile High Ballroom, allowing easy flow between the two spaces.

## KITCHEN

Covering 35,000 square feet, this is the largest kitchen in Colorado. It is located on the ballroom level, providing easy access to all areas of the building. The kitchen can be easily accessed by service corridors from both ballrooms and all meeting rooms for easy and quiet use. Sodexo Live! chefs make use of fresh produce, herbs and spices grown on the property of the Colorado Convention Center at the Blue Bear Farm.







## MILE HIGH BALLROOM DIMENSIONS/CAPACITIES

### SEATING CAPACITIES

Classrooms are based on 6' x 18" unskirted tables with three chairs unless noted.  
Ballrooms are set with an 8' x 12' riser.

BALLROOM	DIMENSIONS W' x L'	SQ. FEET	CEILING HEIGHT	THEATRE	BANQUET	CLASSROOM
1A	30 X 60	1,800	30	180	80	96
1B	30 X 60	1,800	30	180	80	96
1C	30 X 60	1,800	30	180	80	96
1D	30 X 60	1,800	30	180	80	96
1E	30 X 60	1,800	30	180	80	96
1F	30 X 60	1,800	30	180	80	96
2A	45 X 60	2,700	30	260	120	120
2B	45 X 60	2,700	30	260	120	120
2C	45 X 60	2,700	30	260	120	120
3A	45 X 60	2,700	30	260	120	120
3B	45 X 60	2,700	30	260	120	120
3C	45 X 60	2,700	30	260	120	120
4A	30 X 60	1,800	30	180	80	96
4B	30 X 59	1,770	30	180	80	96
4C	30 X 59	1,770	30	180	80	96
4D	30 X 59	1,770	30	180	80	96
4E	30 X 59	1,770	30	180	80	96
4F	30 X 60	1,800	30	180	80	96
1	60 X 180	10,800	30	1,078	560	468
2	45 X 180	8,100	30	686	420	390
3	45 X 180	8,100	30	686	420	390
4	60 X 180	10,800	30	1,078	560	468
2 + 3	90 X 180	16,200	30	1,728	980	780
1 + 2 or 3 + 4	135 X 180	24,300	30	2,744	1,400	1,170
1 + 2 + 3	180 X 180	32,400	30	3,648	1,960	1,560
2 + 3 + 4	180 X 180	32,400	30	3,648	1,960	1,560
Full Ballroom (Head Table West) (1-4)	180 X 265	47,700	30	5,180	3,380	*2,560
Full Ballroom (Head Table North) (1-4)	180 X 265	47,700	30	5,452	3,160	*2,432
Pre-function	80 X 246	19,680			350	

\*8' x 18" unskirted tables with four chairs each.

## FOUR SEASONS BALLROOM DIMENSIONS/CAPACITIES

### SEATING CAPACITIES

Classrooms are based on 8' x 18" unskirted tables with four chairs unless noted.  
Ballrooms are set with an 8' x 12' riser.

BALLROOM	DIMENSIONS W' x L'	SQ. FEET	CEILING HEIGHT	THEATRE	BANQUET	CLASSROOM
1 or 4	73 X 146	10,658	30	924	550	456
2 + 3	90 X 146	13,140	30	1,188	770	608
1 + 2 or 3 + 4	118 X 146	17,228	30	1,568	1,030	816
1 + 2 + 3	146 X 163	23,798	30	2,352	1,430	1,200
2 + 3 + 4	146 X 163	23,798	30	2,352	1,430	1,200
Full Ballroom (Head Table East) (1-4)	146 X 236	34,456	30	3,472	2,150	1,776
Full Ballroom (Head Table North) (1-4)	146 X 236	34,456	30	3,136	2,260	1,728
Pre-function	74 X 176	13,024			340	



# ELEVATE YOUR MEETING IN THE MILE HIGH CITY!

Great facilities are just the beginning. Denver is a vibrant, outdoor city at the base of the Rocky Mountains, the world's most spectacular playground and the perfect backdrop to any meeting (and the perfect place for a getaway before or after a convention)!



## DENVER INTERNATIONAL AIRPORT (DEN)

In 2022, DEN was the third busiest airport in the world! DEN offers nonstop flights from more than 200 domestic and international cities and was recently ranked the No. 2 Airport in the U.S. by the Wall Street Journal. DEN has received other high marks in recent years, including a No. 7 placement in Skytrax World Airport Awards' list of the best regional airports in the world.



## DENVER UNION STATION

Direct rail service connects DEN with Denver Union Station, providing your attendees with a fast, convenient and affordable way to get downtown.



## YEAR-ROUND SUNSHINE

Located east of a major mountain range, Denver enjoys a mild, dry climate and 300 days of annual sunshine – more than San Diego or Miami!



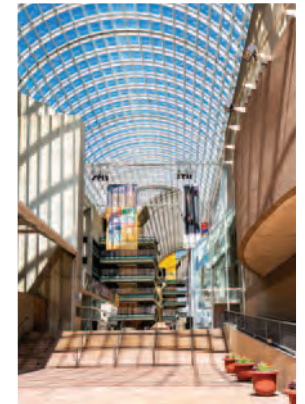
## HOTELS

From two headquarter hotels of 1,100 and 1,238 rooms to luxurious boutique and lifestyle hotels, Denver has more than 13,000 hotel rooms downtown and more than 54,000 throughout the metro area, with all price points and nearly all brands represented.



## ARTS & CULTURE

Denver is the cultural hub of the vast Rocky Mountain West, with more than 300 museums, theaters and art galleries, including the famed Daniel Libeskind-designed Denver Art Museum and the nation's second largest performing arts center.







### **MILE HIGH DINING & NIGHTLIFE**

Denver's dining scene has reached its breakthrough moment! From Food & Wine to The New York Times, Denver's reputation for fine dining has risen enormously, thanks to James Beard Award-winning chefs, innovative chef-owned eateries, gourmet markets, food halls and a focus on locally-sourced cuisine. Denver is also home to more than 100 breweries metro-wide, as well as urban wineries, craft distilleries, dance clubs, comedy clubs, live music venues and more.



### **COME EARLY, STAY LATE**

Play in the mountains, stay in the city! Use Denver as your basecamp for your Rocky Mountain adventures. The Mile High City is just a short drive from some of the most famous resorts and mountain recreation areas in the world, offering outstanding seasonal activities that attendees can enjoy and still be back in Denver by dinnertime. In the winter, guests can enjoy the best skiing and snowboarding anywhere, not to mention areas for snowshoeing, snowmobiling, tubing and more. In the spring, summer and fall, attendees can enjoy golf and spas, as well as the excitement of whitewater rafting, zip-lining, hiking, mountain biking, fly fishing, national parks, historic mining towns and more.



### **OFFSITE MEETING VENUES**

In addition to the Colorado Convention Center, Denver offers many attractive meeting venues, including the Denver Performing Arts Complex, National Western Center, three downtown sports stadiums, world-famous Red Rocks Park & Amphitheatre and Meow Wolf's newest installation, *Convergence Station*.



### **WALKABLE DOWNTOWN**

Downtown Denver is compact and walkable, meaning groups can save on ground transportation. A free shuttle runs along the 16th Street Mall, a mile-long pedestrian promenade from Denver Union Station to Civic Center Park and currently undergoing renovations.



### **SHOPPING**

Denver offers a plethora of shopping options, from the upscale Cherry Creek Shopping Center and tree-lined streets of Cherry Creek North to historic Larimer Square, downtown's 16th Street Mall and beyond into the city's vibrant and diverse neighborhoods.



## PUBLIC ART

Denver has devoted one percent of the construction cost of the CCC to public art. From lobbies to hallways, public art is visible at every turn, running the gamut from the 40-foot-high Blue Bear that greets delegates as they enter the building, to a series of 14 stunning wall-size paintings depicting 500 million years of Colorado's geologic history.



### The Blue Bear

Denver's famous 40-foot-tall Blue Bear, actually called "I See What You Mean" by local artist Lawrence Argent, has become a Mile High City icon.

## GREEN

The largest LEED-certified building in Colorado, the CCC is committed to operations that reduce environmental impact, focus on conserving resources and act as a good partner in our community. Sustainable initiatives focus in the areas of: waste reduction and diversion; energy conservation; water quality and consumption; air quality; procurement; and community. The CCC Sustainability Coordinator can work with event organizers to help them realize their sustainability goals.

### The Blue Bear Farm

Basil and beans, peppers and parsnips, radishes and raspberries – these are just some of the 5,000 plants growing at the Blue Bear Farm. The on-site farm annually grows 5,000 pounds of fresh fruits, vegetables, honey and herbs, all of which are used in-house by chefs to deliver natural, healthy and delicious dishes to convention delegates.



## VENUE SHIELD

ASM Global recently implemented the VenueShield Environmental Hygiene Program, a new environmental hygiene protocol developed in response to evolving guest expectations, stemming from the coronavirus pandemic.



## GLOBAL BIORISK ADVISORY COUNCIL (GBAC)

The Colorado Convention Center has achieved the Global Biorisk Advisory Council® GBAC STAR™ accreditation, the gold standard for prepared facilities. Under the guidance of GBAC, a Division of ISSA, the worldwide cleaning industry association, the CCC has implemented the most stringent protocols for disinfection and infectious disease prevention in its facility.



### VISIT DENVER, THE CONVENTION & VISITORS BUREAU

VISIT DENVER, the official destination marketing organization for the Denver metro area, is comprised of more than 60 professionals here to help with sales, services, attendance building, promotion and attendee resources. The organization has won all convention industry service awards since 1993, including Northstar's Stella Awards and Corporate & Incentive Travel's Award of Excellence. We are your Denver experts, and all of our services are FREE!



### ASM GLOBAL

ASM Global is the world's leading producer of entertainment experiences. It is the global leader in venue and event strategy and management, delivering locally tailored solutions and cutting-edge technologies to achieve maximum results for venue owners. The company's elite venue network spans five continents, with a portfolio of more than 350 of the world's most prestigious arenas, stadiums, convention and exhibition centers, and performing arts venues. For more information, please visit [asmglobal.com](http://asmglobal.com).



### SODEXO LIVE!

Sodexo Live! manages prestigious conference, cultural and sporting venues and major events all over the world. With 40,000 employees and 500 sites, Sodexo Live! offers clients a range of bespoke catering, sales and event management services, helping to transform the consumer experience into unforgettable memories. As strategic and responsible partners, Sodexo Live! commits to unlocking customers' full potential while favoring local communities.









  
**VISIT DENVER**

**[VISITDENVER.com/Conventions](http://VISITDENVER.com/Conventions)**

**VISIT DENVER, The Convention & Visitors Bureau • 1555 California Street, Suite 300, Denver CO 80202 • 303-892-1112 • 800-480-2010**

